

2 QUESTIONS ON THE APRIL 4TH BALLOT

Q1 Capital Referendum

Q2 Operational Referendum

WHERE TO VOTE?

TUESDAY APRIL 4TH POLLS OPEN 7AM - 8PM

- Early, in-person voting begins Tuesday March 21st.
- Visit myvote.wi.gov to learn more and register to vote.

Town of Dover

Dover Town Hall | p: 262-878-2200
4110 S Beaumont Ave | Kansasville, WI 53139

Village of Raymond

Raymond Village Hall | p: 262-835-4426
2275 76th St
Franksville, WI 53126

Village of Yorkville

Union Grove Municipal Center | p: 262-878-2123
925 15th Ave
Union Grove, WI 53182

LEARN MORE

REFERENDUM INFO NIGHTS

Learn about our needs, take a tour and get your questions answered.

WED
MAR
15

6:00 PM

TUES
MAR
28

7:00 PM

COFFEE TUESDAYS @ 9:00 AM

Have coffee with Dr. Mark Rollefson and get your questions answered.

MAR
14

MAR
21

MAR
28

18621 Washington Ave. Union Grove | LIBRARY

REFERENDUM NEWSLETTER

HELLO YORKVILLE!



Dear Yorkville School District Residents,

On January 16, 2023 the Yorkville Board of Education (Board) voted unanimously to place two referendum questions on the ballot for the Tuesday, April 4, 2023 election. The Board is asking community members to voice their opinion and vote.

Q1 What is on the ballot for the capital referendum, or Question 1?

Shall the Yorkville Joint No. 2 School District, Racine County, Wisconsin be authorized to issue pursuant to Chapter 67 of the Wisconsin Statutes, general obligation bonds in an amount not to exceed \$12,100,000 for the public purpose of paying the cost of a school facility improvement project consisting of: renovations, building infrastructure, capital maintenance and site improvements at district facilities; and acquisition of furnishings, fixtures and equipment?

Q2 What is on the ballot for the operational referendum, or Question 2?

Shall the Yorkville Joint No. 2 School District, Racine County, Wisconsin be authorized to exceed the revenue limit specified in Section 121.91, Wisconsin Statutes, by \$900,000 beginning with the 2023-2024 school year, for recurring purposes consisting of operational and maintenance expenses?

Please take this opportunity to learn more about the upcoming referendum questions.



SCAN ME



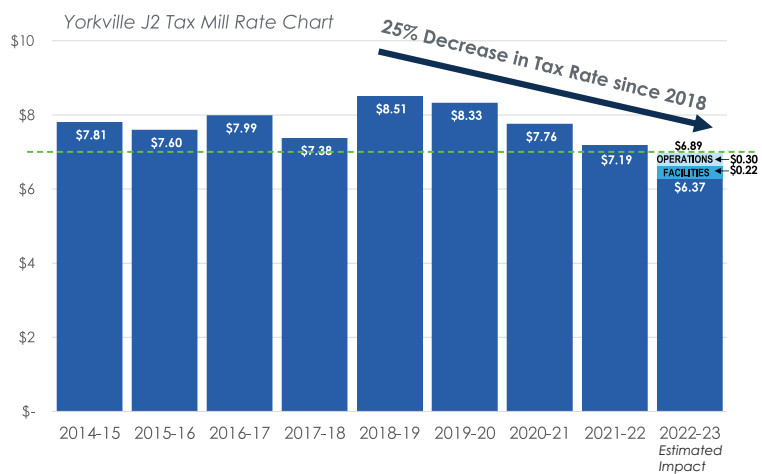
LEARN MORE YORKVILLE.REFERENDUMFACTS.ORG

FACILITY ASSESSMENT

In October and November of 2022, over 50 members of our Board of Education, Administration, Staff and Teachers participated in the facility assessment process. Facilitated by Nexus Solutions, a firm specializing in assessing school facilities. Our team produced a comprehensive report to the Board that was utilized to make informed decisions for the future of the Yorkville School. The assessment focused on seven distinct areas of the Yorkville School, which included mechanical systems, electrical systems, technology systems, exterior maintenance, interior maintenance, special educational spaces, and the site.

FINANCIAL RESPONSIBILITY

Because of ongoing management of the District's finances, the District has reduced tax rates by over 25% over the last five (5) years. The District would be able to address key priorities funded by the proposed operational and capital referendums, while keeping the tax rate below 21-22 levels.



ESTIMATED TAXPAYER DOLLARS

Approval of both the capital + operational referendum would result in an annual estimated tax increase of \$52. OR **\$4.33 per month** for every \$100,000 of property value over the current tax rate.

Q1 CAPITAL Q2 OPERATIONAL

\$1.83 + \$2.50 = \$4.33

per month/ per \$100,000 value



ACCESSIBILITY NEEDS ADA lift not a long-term solution. A ramp is needed. ADA upgrades are also needed in toilet rooms.



UNSAFE WATER A Molybdenum Filtration System for safe drinking water would solve this problem and save the district about \$9,700 per year on water costs.



SINGLE PANE WINDOWS Single pane windows are not safe or energy efficient and are 60+ years old.



ORIGINAL ELECTRICAL PANEL The main electrical panel is outdated and becoming difficult to repair. It does not meet current code standards.

THE REFERENDUM SOLUTIONS

Our key needs that the proposed referendums seek to address, include:

Q1 CAPITAL REFERENDUM



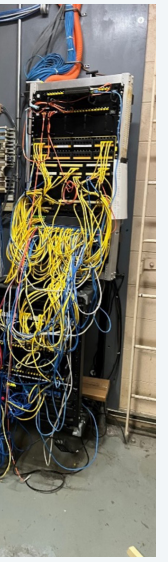
ENERGY & MAINTENANCE

- Retro-commissioning of existing HVAC and boiler
- Flush valve replacements
- Replacement of the 1965 sanitary sewer- to eliminate frequent backups
- Interior & exterior lighting upgrades
- Flooring, ceiling, interior door, and classroom cabinet replacements
- 2007 gymnasium wood floor refurbishment
- Single-pane window replacement for efficiency and comfort
- Brick and concrete maintenance to repair cracking, sealants, and rusting
- Select exterior door and hardware replacement
- Accessibility upgrades to 1965 and 1991 toilet rooms
- Receiving, maintenance and storage addition to eliminate deliveries on playground



TECHNOLOGY & ELECTRICAL

- Main electrical service upgrades – replacement and upsizing for AC
- Replace original 1959/1965 electrical panelboards to improve reliability
- Replace older electrical outlets and install additional outlets for needs
- Phone system replacement and public address system upgrades
- Data and wireless system upgrades
- Upgrades to card access system and CCTV camera system
- 2007 gymnasium sound system upgrades



SITE SAFETY & PARKING

- Reconfiguration of car drop off and pick up loop to improve traffic flow and safety
- North, East, Courtyard, & Basketball pavement maintenance and reconstruction
- ADA accessibility improvements to bus loop/North entrance and transformer
- Drainage corrections
- Move delivery away from playground



HEALTHY LEARNING ENVIRONMENTS

- Installation of a Molybdenum Filtration System for safe drinking water
- Special education classroom(s) remodeling to accommodate changing needs
- Classroom unit ventilator replacement and the addition of air conditioning
- Conversion of Furnace Installed in 1959 for efficiency and air conditioning
- Asbestos abatement
- ADA Ramp to replace undersized lift
- Outdoor STEM classroom opportunities
- Outdoor club related opportunities



Q2 OPERATIONAL REFERENDUM

ATTRACT AND RETAIN NEEDED STAFF

OPTIMIZE LEARNING ENVIRONMENTS AND MAINTAIN CLASS SIZES

FUND INCREASING COSTS FOR NEEDS SUCH AS TRANSPORTATION, UTILITIES, TECHNOLOGY, CURRICULUM, ETC.

ADDRESS ONGOING MAINTENANCE NEEDS NOT NOT INCLUDED IN THE CAPITAL REFERENDUM

WHY GO TO REFERENDUM NOW?

- Due to State aid decreases, prioritized needs cannot be addressed within annual budgets.
- Needs have been prioritized based on extensive feedback from the community and staff, resulting in a long-term plan to address our facility needs.
- Because of ongoing management of the District's finances, the District has reduced tax rates by over 25% over the last five (5) years. The District is able to address key priorities funded by the proposed operational and capital referendums, while keeping the tax rate below 21-22 levels.